

Readit Wand

from  VisionAid
International



Portable camera to instantly read & magnify your documents

- **Near instant & very accurate**
- **Exceptionally powerful software**
- **Compact, stylish & lightweight**
- **Automatic multi-language switching**
- **Save, load, import, export & bookmark your documents**

Who is the Readit Wand for?


Readit Wand is for any visually impaired or blind computer user, who wants near instant, easy and accurate access to printed or electronic format documents.


Just plug the lightweight camera into your PC or laptop and it instantly translates any printed text into crystal clear speech. Letters, receipts, bank statements, books, product packaging etc. are all read with ease.


Its pull out positioning guide also allows users with no vision at all to perfectly place their documents.



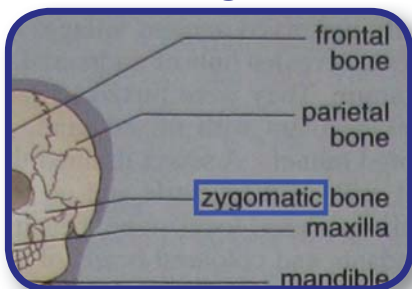
Readit Wand Key Features

 **Read faster & more easily:** Automatic formatting and reading make X/Y reading tables a thing of the past.

 **Automatic multi-lingual speech output:** Readit Wand also reads your documents out loud to you with lifelike voices and automatically changes voice depending on the language of the document! The speech is ideal for blind users or to give low vision users' eyes a rest.

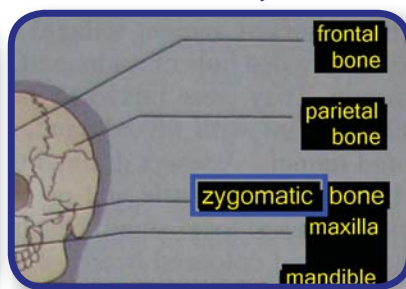
 **6 enhanced visualisations:** View your captured documents from x0.2 to x80 magnification in any one of 6 visualisations. Text automatically flows from one line to the next and can be read out at any time.

Image



For photographs & hand written text

Overlay



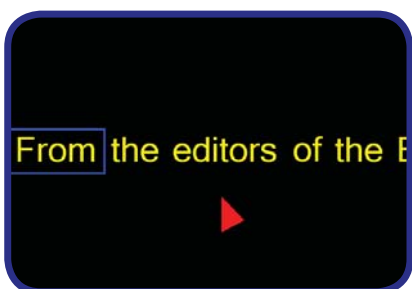
Ideal for diagrams & bank statements

Word



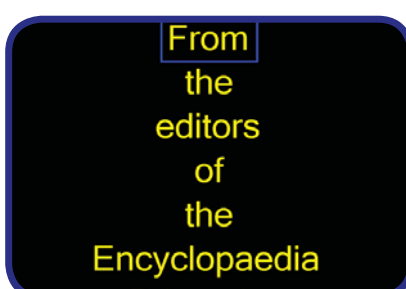
For large magnifications

Horizontal



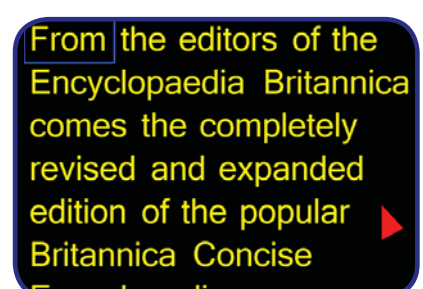
Text on a single line

Vertical



Specifically for tunnel vision

Column



Most popular view for long text passages



5 megapixel images: Extremely high resolution images guarantee the best possible accuracy down to 6pt text.



Virtual X/Y Live View: For access to documents without capturing, just place them under the Wand, and move the magnified real-time image around with your mouse! It's so much faster and easier than moving the page!



Document Storage: Capture entire text books in minutes then store & organise them on your laptop! Readit Wand even remembers what page you were on!



Import and export documents: Import any document - PDF, Word, Email etc & read it directly in Readit. Export your documents to Word, txt, RTF, MP3. **MP3 export** is very useful as a **revision aid**.



Windows 7 Multi-Touch Support: Documents can be **zoomed, navigated & controlled** even more intuitively. Tracking a cursor becomes a thing of the past!



Text Highlighting: 3 different highlights are available.



Easy Access Toolbar: An adjustable size and position toolbar with clear, colourful icons gives instant access to all the basic controls.



Portability: At just 690 g (1.5 lbs) Readit Wand is small enough and light enough to be taken with you anywhere.



Incredible document straightening abilities: Readit Wand's advanced software straightens extremely bent spines of books, tins of food and even 3D perspective corrects objects.

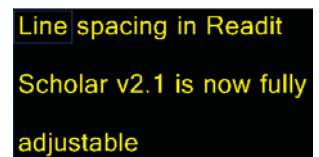
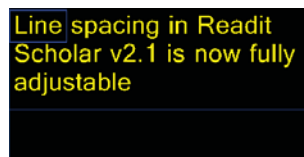


Multi-screen support: Readit Wand has built in support for multiple screens and features dedicated keyboard support to control the Readit software directly from within other applications.

This makes writing and editing documents that you're reading simple!



Variable Line Spacing: Users can now easily adjust the space between lines of text to suit their preferences.



Included accessories / options



- Headphones with in-line volume control.
- Additional user licenses available (3 installs per user provided as standard).
- Additional languages (see website for complete listing).
- All future version 2.x software upgrades included free of charge.

Specifications

Magnification Live:	Up to 32x (on a 22" screen)
Magnification Captured:	0.2 - 80x (effectively unlimited)
Capture Resolution:	5 mega pixels
Capture Speed:	Up to 20 pages per minute
Time to Read:	2 to 15 seconds (hardware dependent)
Dimensions WxDxH:	Centimetres: 6.5 x 8.1 x 41.7 Inches: 2.6 x 3.2 x 16.4
Weight:	690 grams (1.5 lbs)
Power:	USB only, less than 500 milliamps at 5V
Connectivity:	1x USB 2.0

Computer Requirements

PC Component	Minimum	Recommended
OS:	Windows XP, Vista 32 & 64 bit, Win 7 32 & 64 bit	Windows 7 32 or 64 bit
CPU:	Intel Atom	Dual Core 1.6 Ghz
RAM:	XP: 512MB. Vista & 7: 1GB	XP: 1GB. Vista & 7: 1.5 GB
HDD:	600 MB	2GB

For more information, please contact:



Blinksoft

12 E Rolling Acres
Weaverville, Nc 28787

Phone: (866) 206-7249

Web: www.blinksoftinc.com

Email: info@blinksoftinc.com